



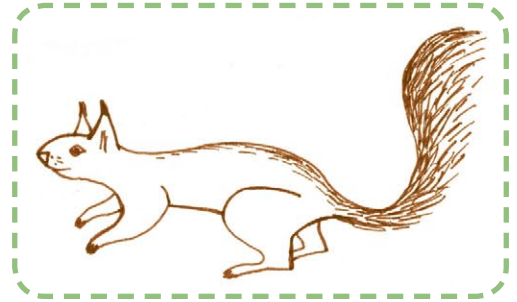
SNAIL



HOLLOW TREE



PINE CONE



SQUIRREL



LEAF EATEN
BY AN INSECT



ACORN



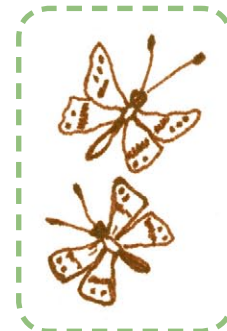
ANTHILL



BEAUTIFUL FLOWER



CLOSE YOUR EYES,
HOW MANY SOUNDS
DO YOU HEAR?



BUTTERFLY



FEATHER



EDIBLE MUSHROOM



FOREST BIRD
(WOODPECKER)



HEDGEHOG



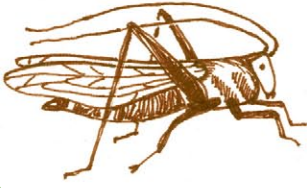
AMANITA



BUG



FOOTPRINTS
OF ANIMALS AND BIRDS



GRASSHOPPER



TREE STUMP



SPIDER WEB



WILD BERRIES



LADYBIRD



MOLE HILL



FIND WALKING STICK



DRAGONFLY



NEST



FROG

A STICK OR STONE THAT LOOKS
LIKE SOMETHING

BEE



OXALIS



MOSS

TREASURE
NOT ON THIS LIST